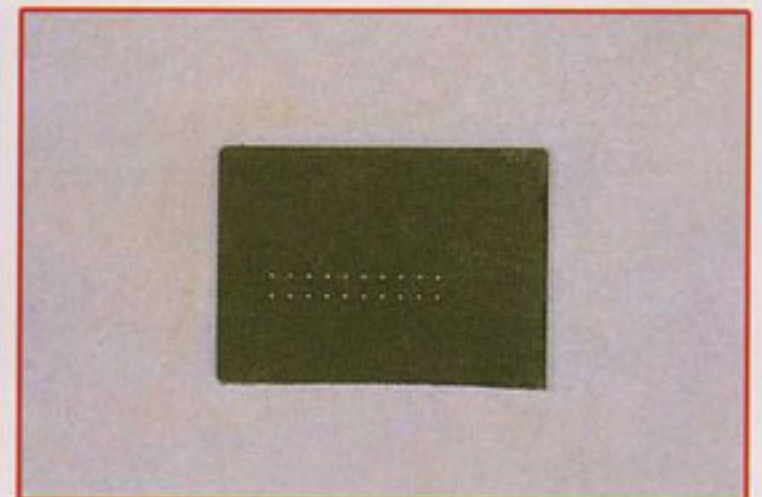
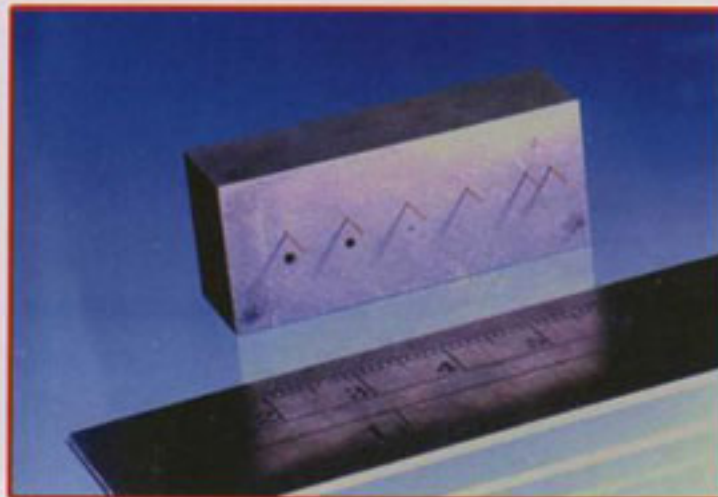
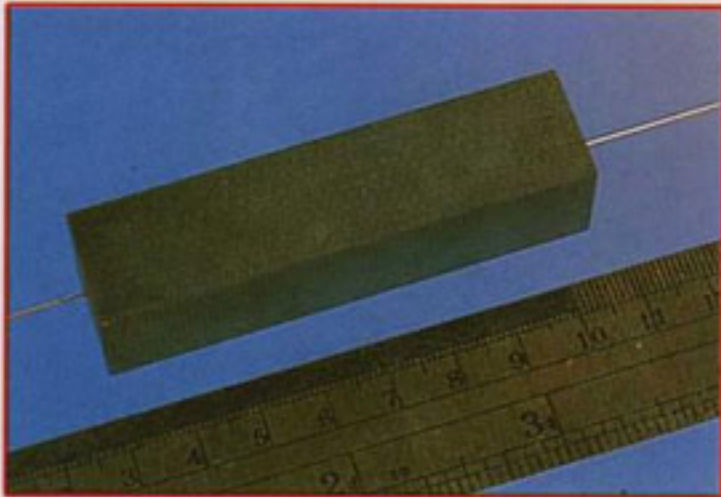


加工範例 Machining Samples



Workpiece : Carbide CD650, 76mm

Workpiece : Carbide VD20, 11mm

Workpiece : Stainless Steel, 0.3mm

工件：超微粒鎢鋼 CD650, 76mm 厚

工件：超微粒鎢鋼 VD20, 11mm 厚

工件：不鏽鋼 0.3mm 厚

Electrode Dia. : 0.5mm copper tube

Electrode Dia. : 0.2mm copper tube

Electrode Dia. : 0.05mm

電極尺寸：0.5mm 紅銅

電極尺寸：0.2mm 紅銅

電極尺寸：0.05mm

Precision High Speed Drill EDM series:

Precision EDM Drill : MD Series

CNC EDM Drill : SDNC Series

Fast EDM Drill : FD Series



● MD20



● SDNC16P



● FD20

1. Drilling capacity from 0.03mm to 6.0mm.
2. IC lead frame mold drilling (0.1mm tungsten steel 8mm depth).
3. FD series, 1.0mm electrode drill 25mm workpiece about 30 seconds.
4. Thread tapping sizes M2, M2.5, M3, M4, M5, M6 & M8 (& inch sizes).
5. CNC with auto electrode changer.
6. Accessing DXF files as a CNC program.

7. Many models, travel from 100x 100 to 800 x 2,000mm.
8. World wide after-sales service networks supporting.
9. Traditional EDM, with digital panel and automatic EDM processing.
10. All series X and Y-axes with Linear scales and DRO.
11. More functions are available. Please contact us or [Visit Our Website for More Information.](#)