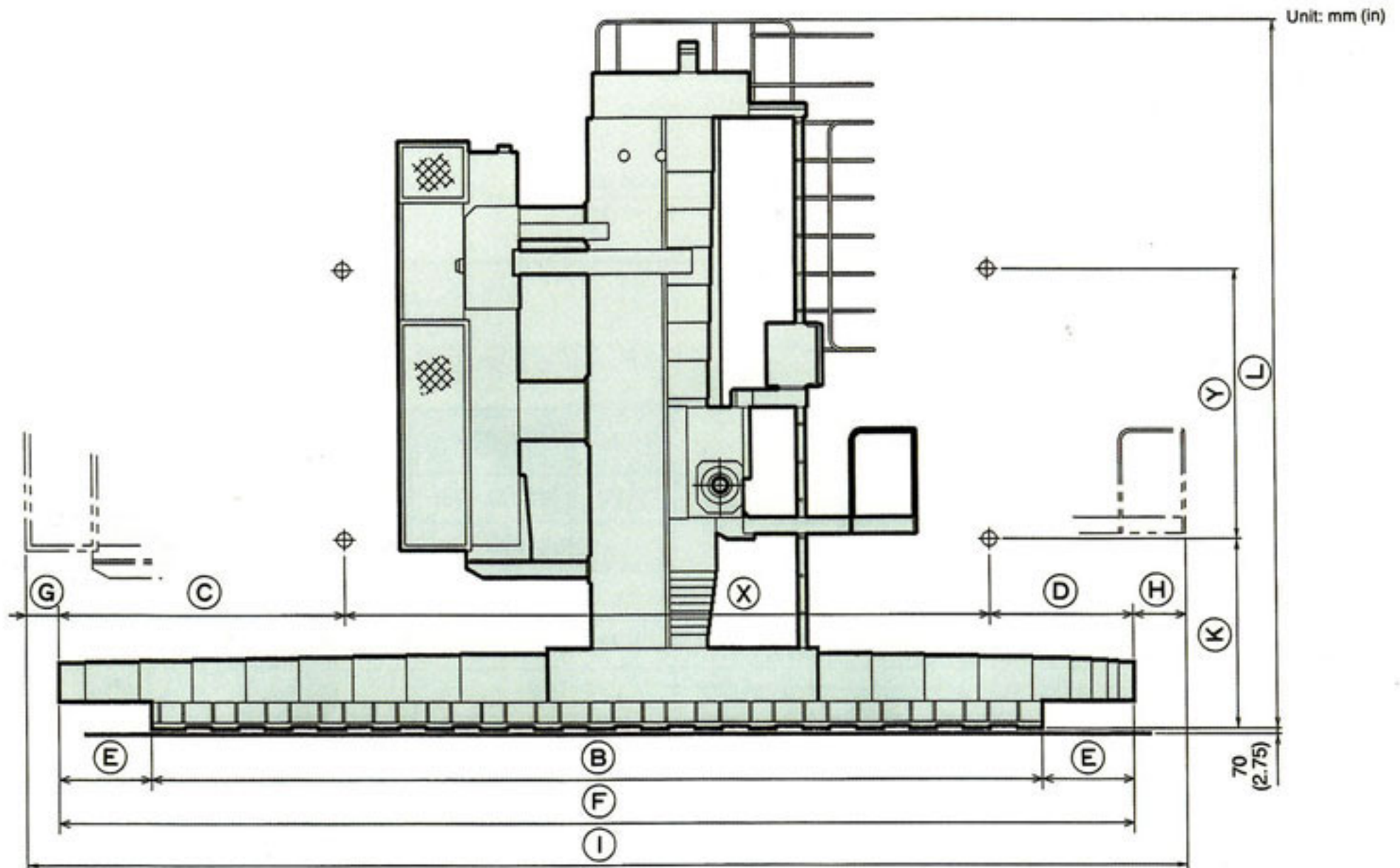


尺寸 Dimensions



CBM-135P

單位Unit : mm (in)

	4,000 (157)	5,000 (196)	6,000 (236)	7,000 (275)	8,000 (314)	9,000 (354)	10,000 (393)
(X)	4,000 (157)	5,000 (196)	6,000 (236)	7,000 (275)	8,000 (314)	9,000 (354)	10,000 (393)
(B)	6,300 (248)	7,300 (287)	8,300 (327)	9,800 (386)	10,800 (425)	11,800 (465)	12,800 (504)
(C)	2,670 (105)	2,670 (105)	2,670 (105)	2,590 (102)	2,590 (102)	2,660 (104)	2,600 (102)
(D)	1,330 (52)	1,330 (52)	1,330 (52)	1,710 (67)	1,710 (67)	1,780 (70)	1,780 (70)
(E)	850 (33.5)	850 (33.5)	850 (33.5)	750 (29.5)	750 (29.5)	820 (32.3)	820 (32.3)
(F)	8,000 (315)	9,000 (354)	10,000 (394)	11,300 (445)	12,300 (484)	13,440 (529)	14,400 (569)
(G)	130 (5.1)	130 (5.1)	130 (5.1)	210 (8.3)	210 (8.3)	140 (5.5)	140 (5.5)
(H)	490 (19.3)	490 (19.3)	490 (19.3)	110 (4.3)	110 (4.3)	40 (1.57)	40 (1.57)
(I)	8,620 (339)	9,620 (379)	10,620 (418)	11,620 (457)	12,620 (497)	13,620 (537)	14,620 (576)
(M)	11,000 (443)	12,000 (472)	13,000 (512)	14,300 (563)	15,300 (602)	16,440 (647)	17,440 (687)

CBM-135QF

單位Unit : mm (in)

	4,000 (157)	5,000 (196)	6,000 (236)	7,000 (275)	8,000 (314)	9,000 (354)	10,000 (393)
(X)	4,000 (157)	5,000 (196)	6,000 (236)	7,000 (275)	8,000 (314)	9,000 (354)	10,000 (393)
(B)	6,300 (248)	7,300 (287)	8,300 (327)	9,800 (386)	10,800 (425)	11,800 (465)	12,800 (504)
(C)	2,670 (105)	2,670 (105)	2,670 (105)	2,590 (102)	2,590 (102)	2,660 (104)	2,600 (102)
(D)	1,330 (52)	1,330 (52)	1,330 (52)	1,710 (67)	1,710 (67)	1,780 (70)	1,780 (70)
(E)	850 (33.5)	850 (33.5)	850 (33.5)	750 (29.5)	750 (29.5)	820 (32.3)	820 (32.3)
(F)	8,000 (315)	9,000 (354)	10,000 (394)	11,300 (445)	12,300 (484)	13,440 (529)	14,400 (569)
(G)	130 (5.1)	130 (5.1)	130 (5.1)	210 (8.3)	210 (8.3)	140 (5.5)	140 (5.5)
(H)	490 (19.3)	490 (19.3)	490 (19.3)	110 (4.3)	110 (4.3)	40 (1.57)	40 (1.57)
(I)	8,620 (339)	9,620 (379)	10,620 (418)	11,620 (457)	12,620 (497)	13,620 (537)	14,620 (576)
(M)	11,000 (443)	12,000 (472)	13,000 (512)	14,300 (563)	15,300 (602)	16,440 (647)	17,440 (687)

(Y)	滑枕垂直行程 Headstock vertical travel	2,000 (78)	2,500 (98)	3,000 (118)	3,500 (137)
(K)	標準 Standard	1,405 (55)	1,405 (55)	1,405 (55)	
	滑軌防塵蓋 Steel cover for slideway	1,635 (64)	1,635 (64)	1,635 (64)	1,635 (64)
(L)	標準 Standard	6,000 (236)	6,000 (236)	6,500 (256)	
	滑軌防塵蓋 Steel cover for slideway	6,000 (236)	6,650 (262)	7,250 (285)	7,700 (303)

(Y)	滑枕垂直行程 Headstock vertical travel	2,000 (78)	2,500 (98)	3,000 (118)	3,500 (137)
(K)	標準 Standard	1,375 (35)	1,375 (35)	1,375 (35)	
	滑軌防塵蓋 Steel cover for slideway	1,605 (63)	1,605 (63)	1,605 (63)	1,605 (63)
(L)	標準 Standard	6,000 (236)	6,000 (236)	6,000 (236)	
	滑軌防塵蓋 Steel cover for slideway	6,000 (236)	6,650 (262)	7,250 (285)	7,700 (303)

機械淨重 Machine net weight

單位Unit : kg (lb)

Item	CBM-135P							CBM-135QF						
	4,000 (157)	5,000 (196)	6,000 (236)	7,000 (275)	8,000 (314)	9,000 (354)	10,000 (393)	4,000 (157)	5,000 (196)	6,000 (236)	7,000 (275)	8,000 (314)	9,000 (354)	10,000 (393)
立柱橫向行程 Column cross traverse	2,000 (78)	2,500 (98)	3,000 (118)	3,500 (137)	4,000 (157)	5,000 (196)	6,000 (236)	7,000 (275)	8,000 (314)	9,000 (354)	10,000 (393)	11,000 (443)	12,000 (472)	13,000 (512)
滑枕垂直行程 Headstock vertical travel	2,000 (78)	28,500 (62,831)	30,000 (66,138)	31,500 (69,445)	33,000 (72,752)	36,000 (79,366)	37,500 (82,672)	28,500 (62,831)	30,500 (67,240)	32,000 (70,547)	33,500 (73,854)	35,000 (77,161)	38,000 (83,775)	39,500 (87,082)
	2,500 (98)	28,500 (62,831)	30,000 (66,138)	31,500 (69,445)	33,000 (72,752)	36,000 (79,366)	37,500 (82,672)	28,500 (62,831)	30,500 (67,240)	32,000 (70,547)	33,500 (73,854)	35,000 (77,161)	38,000 (83,775)	39,500 (87,082)
	3,000 (118)	29,500 (65,036)	31,000 (68,343)	32,500 (71,650)	34,000 (74,956)	37,000 (81,570)	38,500 (84,877)	29,500 (65,036)	31,500 (69,445)	33,000 (72,752)	34,500 (76,059)	36,000 (79,366)	39,000 (85,979)	40,500 (89,286)
	3,500 (137)	31,000 (68,343)	32,500 (71,650)	34,000 (74,956)	35,500 (78,263)	38,500 (84,877)	40,000 (88,184)	31,000 (68,343)	33,000 (72,752)	34,500 (76,059)	36,000 (79,366)	37,500 (82,672)	40,500 (89,286)	42,000 (92,593)